

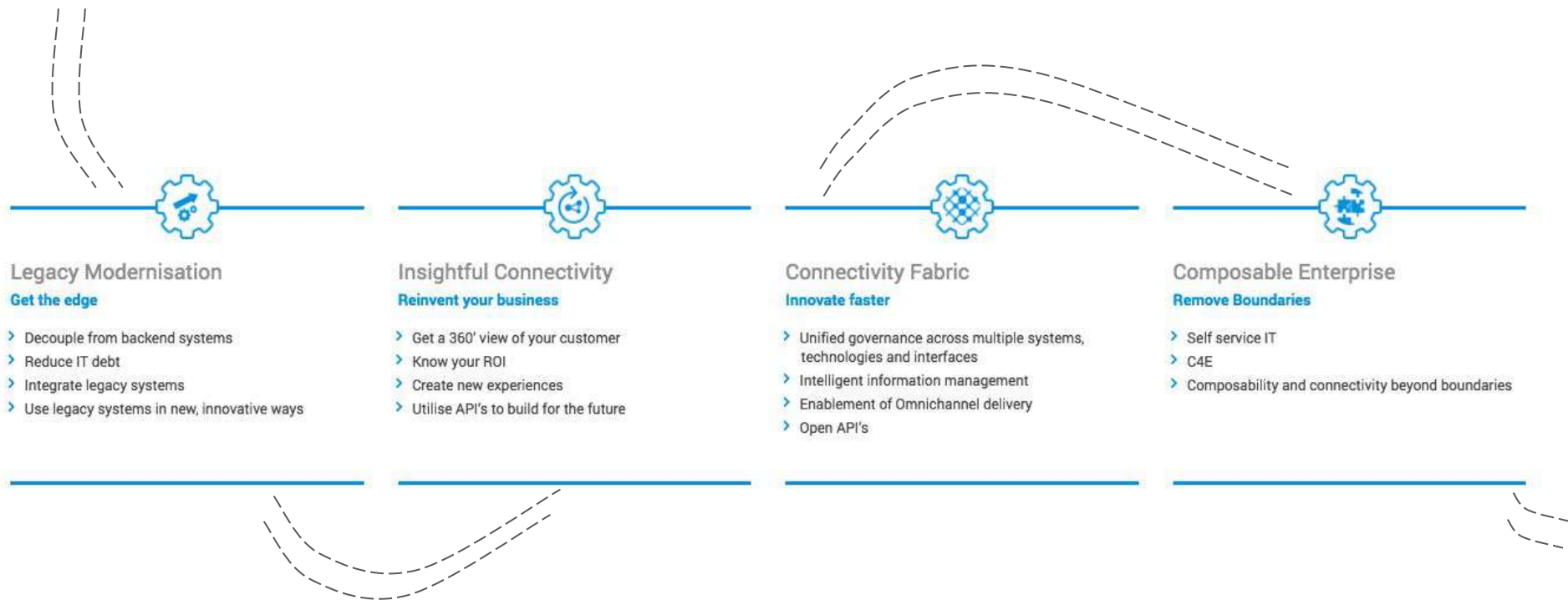
Your trusted connectivity partner

Ricston Ltd.
<https://www.ricston.com/>
UK +44 (0)2071935107
MT +356 2133 4457
sales@ricston.com

- Established in 2006 by Ross Mason & Peter Delia
- One of the first MuleSoft partners
- Core competence - sustainable connectivity
- Geared up to deliver full-cycle solutions
- 12 years of experience
- Delivered over 350 integration projects
- On-shore, near-shore and mobile teams
- 50+ MuleSoft certifications

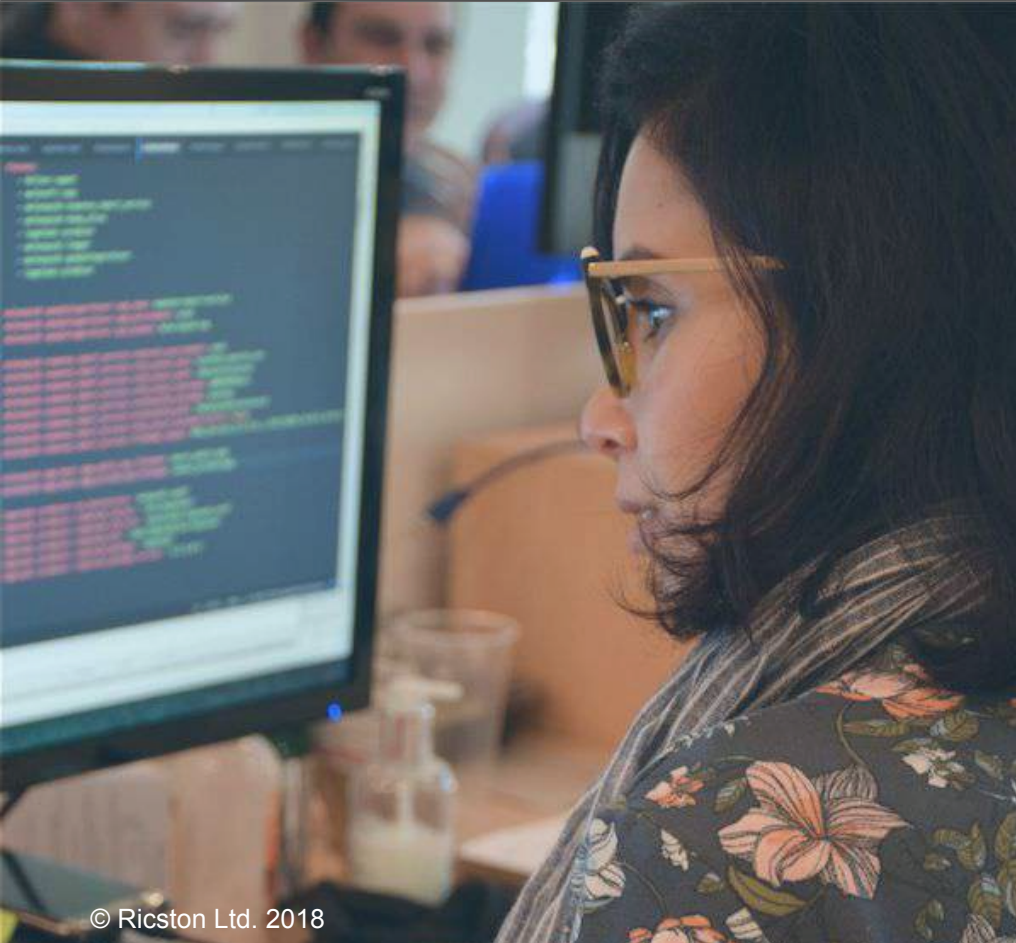


Ricston's mission is to lead organisations through their **Digital Transformation Journey** and bring experience and best practices to accelerate results while developing long lasting and trusted customer relationships.



- Architectural Maturity Assessment
- Reference Architecture
- Software Integration
- API Foundation
- Platform Roadmap
- Continuous Delivery
- Onsite & Remote Development
- Connectors Development
- Training & Enablement
- Centre for Enablement (C4E)
- MuleSoft Anypoint Platform licensing





- MuleSoft Anypoint Platform
- Mule Kernel - Open source
 - Mule ESB
 - REST/ RAML
- Java - Spring
- Bonitasoft BPM
- Apache Software, CXF, Active MQ, Brooklyn
- Web, nodejs and AngularJS development
- Elasticsearch, Kibana, MapR
- Enterprise Apps: IBM WebSphere MQ
- Web Services: REST/SOAP services
- CMS: Alfresco
- SaaS: Google, Salesforce, Workday
- JMS: Active MQ, Rabbit MQ
- E-Commerce: Magento, PayPal,
- Payment Gateways
- CRM: Salesforce, SugarCRM, Vtiger
- ERP : Netsuite, SAP
- Databases: Mongo DB, MySQL, PostgreSQL, Oracle DB, Cassandra

We, at Ricston, are very proud of our loyal and talented team that is recognised as a group of experts in the field of Enterprise Integration and Connectivity and is highly appreciated and trusted by our clients.

- Solution Architects
- Integration Consultants
- Java & Mule Developers
- Trainers
- Project Managers
- SCRUM Masters
- Engineers
- Testers & QA

Our way of working: continuous delivery framework and agile methodology.

51

MuleSoft certifications





Onsite core team

Business Analysis & Design
Project Management
Development
Enablement & Training

Nearshore support team

Development & QA
Support

Centre for Enablement (C4E) is an innovative operating model that accelerates API-led digital transformation and reduces pressure on the central IT teams.

Centre for Enablement



People



Processes



Technology



Assets

Delivering on business requirements

Unlock new revenue streams with API's

Accelerate go-to-market and increase ROI

Improve revenue management and comply with regulations

Deliver better customer experience and accelerate sales process

Improve HR function with Employee Life Cycle management system

Open up internal systems for affiliates and third parties

Offer consistent digital experience to customers across channels

Working with multiple apps





Google DFP for Publishers

Google DFP Connector enables publishers and third-parties to customise and extend their products, help them grow, sell, schedule, deliver and measure all of their digital advertising inventory.



Google Cloud Storage

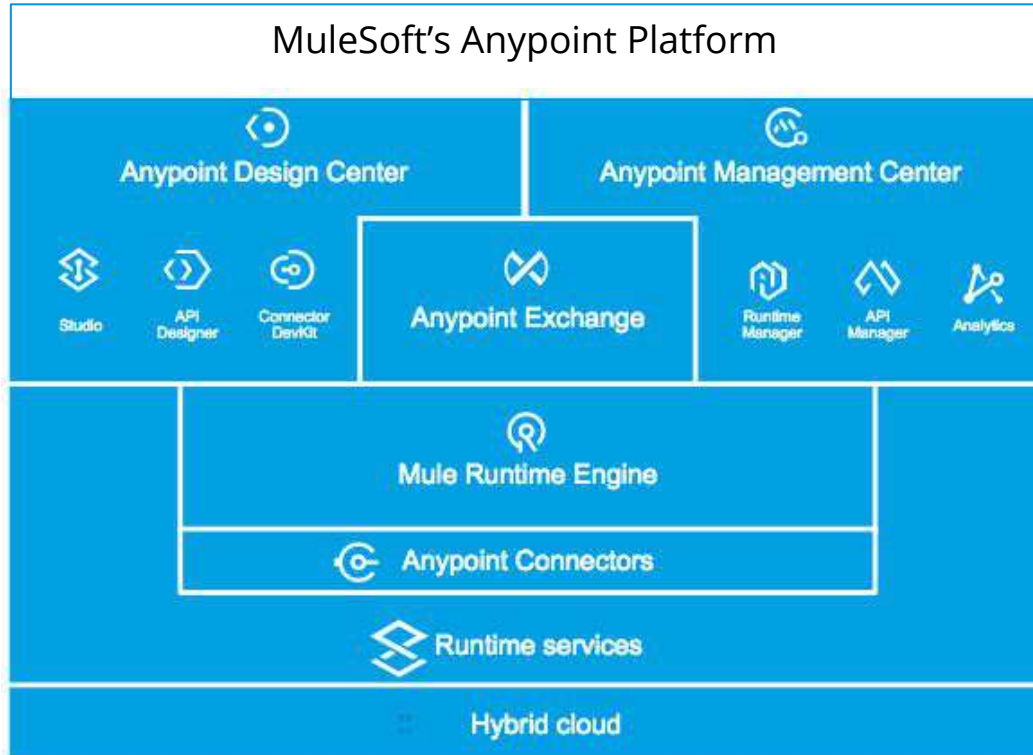
Google Cloud Storage connector enables users to store and manage files on the Google Cloud Storage Platform. Google Cloud Storage allows world-wide storage and retrieval of any amount of data at any time.



The Vault Anypoint Connector

The HashiCorp Vault Connector enables developers to handle secrets, such as passwords, in the Vault platform on MuleSoft Anypoint Runtime.

About Mule & Anypoint Platform



MuleSoft's **Anypoint Platform™** is a leading solution for API-led connectivity that creates an application network of apps, data, and devices, both on-premises and in the cloud.

Mule – is a runtime engine of Anypoint Platform, that leverages mainstream Java development tools like Eclipse, Maven, Spring & Ant.

This hybrid integration platform includes iPaaS, ESB, and a unified solution for API management, design and publishing.

MuleSoft (MULE) is a unicorn software company based in San Francisco and the main partner of Ricston since 2006.

Our Relationship with MuleSoft

- Partners for ~12 years
 - Delivery
 - Training
 - Resale
 - Connectors Development
- Working closely with many teams within MuleSoft
 - Services/Engagements
 - Account Executives
 - Customer Success
 - Support



The background is a dark, blue-toned aerial photograph of a city at night. Light trails from traffic on a multi-lane highway lead from the bottom center towards the middle of the frame. Overlaid on the city are numerous white, glowing arcs that connect various points across the skyline, representing a network or data flow. The overall mood is technological and interconnected.

Thank you!

Ricston Ltd.
<https://www.ricston.com/>
UK +44 (0)2071935107
MT +356 2133 4457
sales@ricston.com